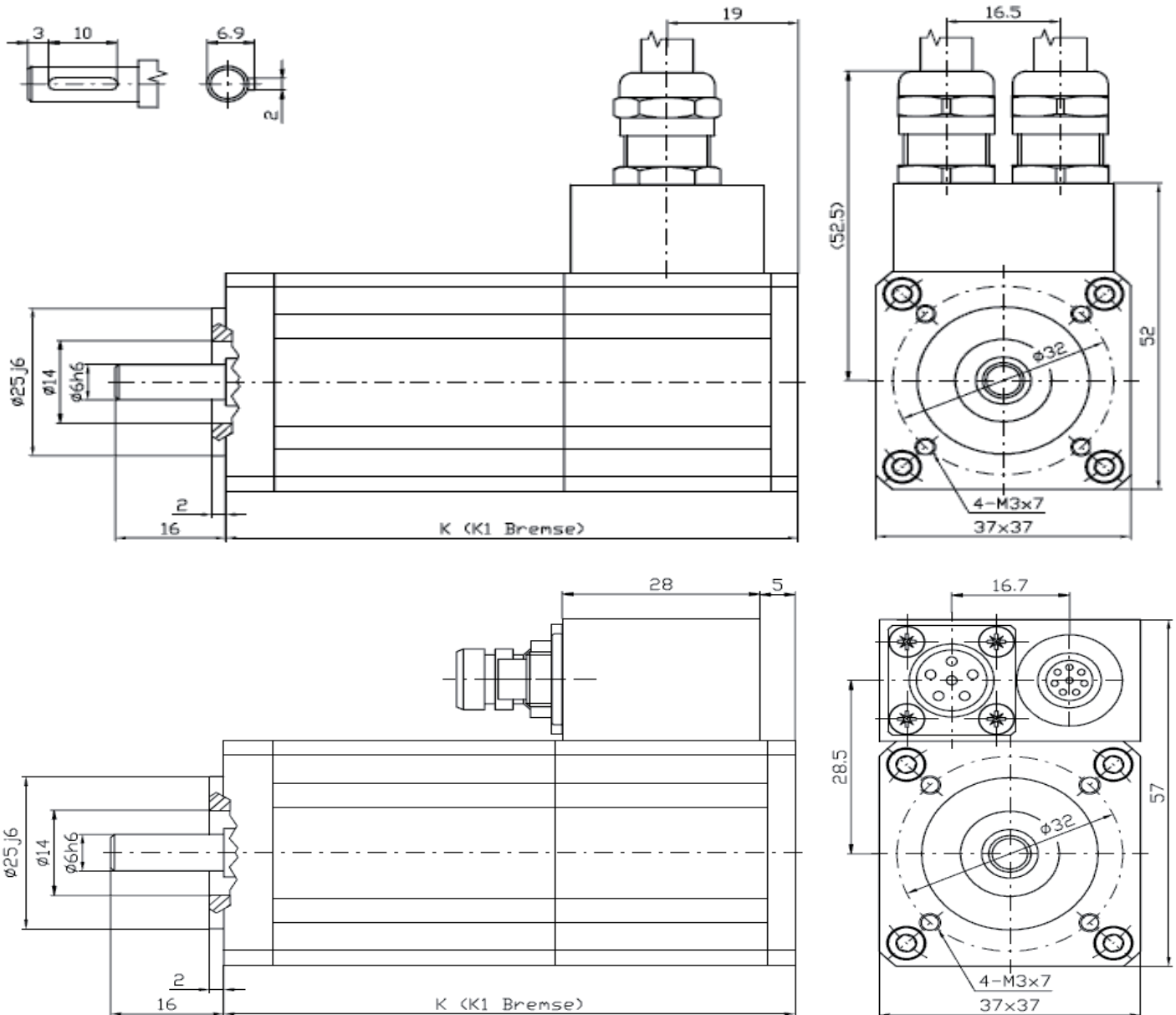


SERVOMOTORS SMXT1

0.1-0.3 Nm

DIMENSIONS



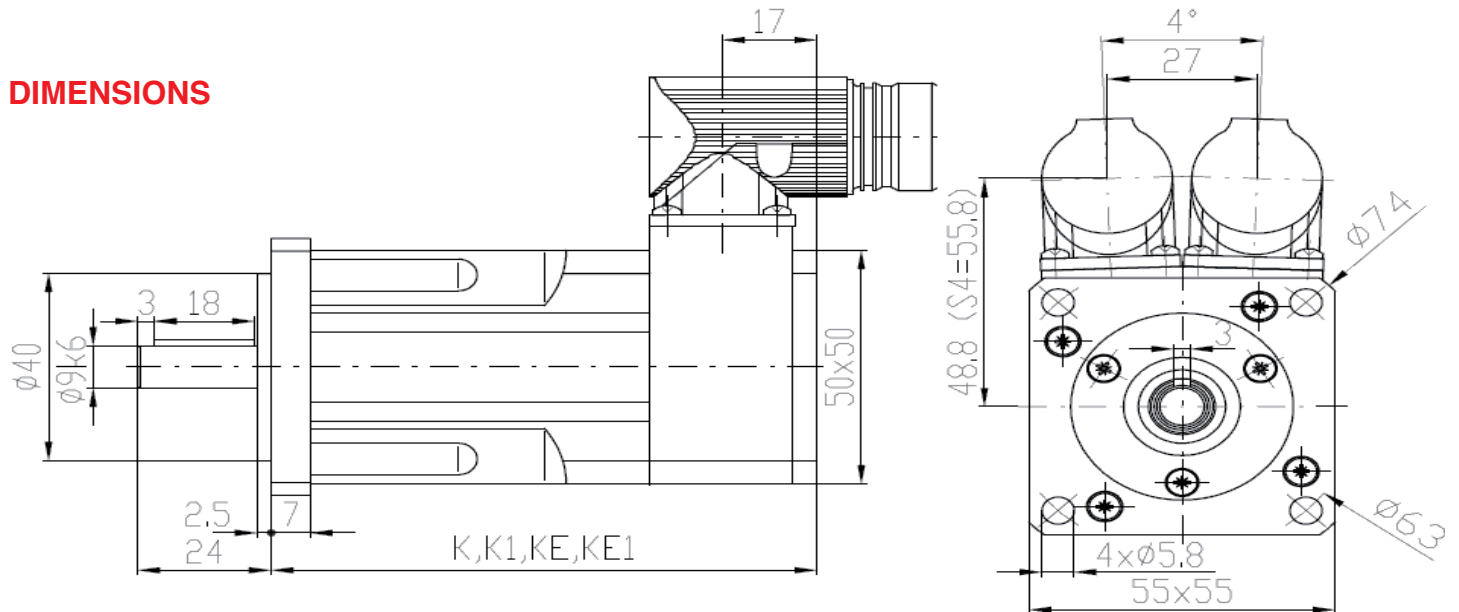
Type	K (resolver)	K1 (resolver+brake)
SMXT1-10	81 mm	111 mm
SMXT1-20	96 mm	126 mm
SMXT1-30	111 mm	141 mm

On request we can send you the technical parameters of the motors designed for different DC-Voltages or speed/torque characteristics. Other adaptations and modifications are possible.

SERVOMOTORS SMXT2

0.2-0.8 Nm

DIMENSIONS



Type	K (resolver)	K1 (resolver+brake)	KE (EnDat)	KE1(EnDat+brake)
SMXT2-40	113 mm	146 mm	157 mm	190 mm
SMXT2-60	128 mm	161 mm	172 mm	205 mm
SMXT2-80	143 mm	176 mm	187 mm	220 mm

On request we can send you the technical parameters of the motors designed for different DC-Voltages or speed/torque characteristics. Other adaptations and modifications are possible.

TECHNICAL DATA

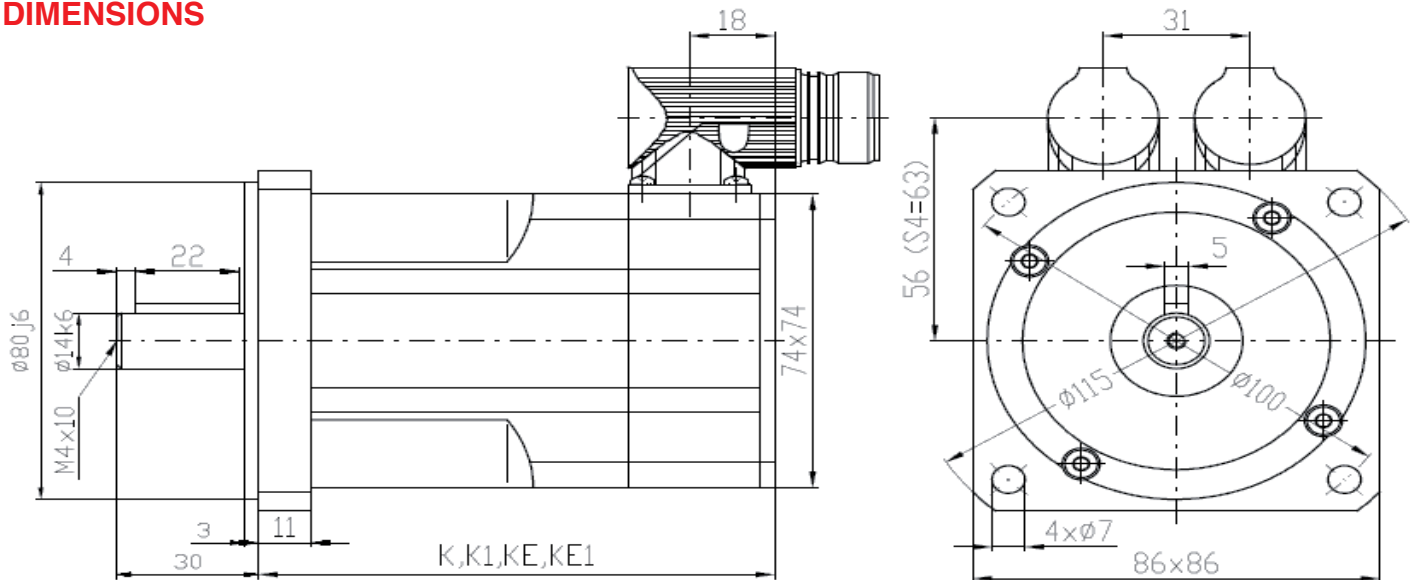
		VDC	36			320				
Magnets Nd-Fe-B			SMXT3-65	SMXT3-130	SMXT3-65	SMXT3-130	SMXT3-190	SMXT3-250	SMXT3-300	SMXT3-65
Stall torque	M_0	Nm	0,65	1,3	0,65	1,3	1,9	2,5	3	0,65
Stall current	I_0	A	8,5	8,4	1,75	2,9	4,3	3	3,5	0,91
Nominal torque	M_N	Nm	0,62	1,15	0,55	1	1,35	2,2	2,5	0,55
Nominal speed	n_N	min. ⁻¹	2000	1500	6000	6000	6000	3000	3000	6000
Nominal power	P_N	W	129	180	346	629	849	692	786	346
Nominal current	I_N	A	8,64	8,55	1,59	2,4	3,3	2,7	3	0,83
Maximum torque	M_{max}	Nm	2	5,2	2,6	5,2	7,6	10	12	2,6
Maximum current	I_{max}	A	37	36	7,5	12,5	18,6	13	15	3,9
Max. speed mech.	n_{max}	min. ⁻¹	12000	12000	12000	12000	12000	12000	12000	12000
Torque constant	K_M	Nm/A	0,08	0,15	0,37	0,45	0,44	0,83	0,86	0,71
Voltage constant	K_E	V/1000 min. ⁻¹	4,6	9,4	22,5	27	26,5	50	52	43
Resistance 2 ph.	R_{2Ph}	Ω	0,44	0,5	9,7	4,2	2,3	5,4	4,1	37,6
Inductance 2 ph.	L_{2Ph}	mH	0,5	0,85	12,5	7,2	4,3	11,7	9,4	45
Inertia	J	kgcm ²	0,5	0,65	0,5	0,65	0,92	1,4	1,5	0,5
Mass without brake	m	kg	1,75	2,25	1,75	2,25	2,7	3,2	3,65	1,75
Mass with brake	m_{Br}	kg	2,3	2,8	2,3	2,8	3,25	3,75	4,2	2,3
Brake torque	M_{Br}	Nm	4,5	4,5	4,5	4,5	4,5	4,5	4,5	4,5

		VDC	560			
Magnets Nd-Fe-B			SMXT3-130	SMXT3-190	SMXT3-250	SMXT3-300
Stall torque	M_0	Nm	1,3	1,9	2,5	3
Stall current	I_0	A	1,67	2,5	1,8	2,1
Nominal torque	M_N	Nm	1	1,35	2,2	2,5
Nominal speed	n_N	min. ⁻¹	6000	6000	3000	3000
Nominal power	P_N	W	629	849	692	786
Nominal current	I_N	A	1,4	1,9	1,62	1,82
Maximum torque	M_{max}	Nm	5,2	7,6	10	12
Maximum current	I_{max}	A	7,2	10,7	7,7	9
Max. speed mech.	n_{max}	min. ⁻¹	12000	12000	12000	12000
Torque constant	K_M	Nm/A	0,78	0,76	1,39	1,44
Voltage constant	K_E	V/1000 min. ⁻¹	47	46	84	87
Resistance 2 ph.	R_{2Ph}	Ω	12,7	6,7	15	11,6
Inductance 2 ph.	L_{2Ph}	mH	21,5	13,1	31,4	26,7
Inertia	J	kgcm ²	0,65	0,92	1,4	1,5
Mass without brake	m	kg	2,25	2,7	3,2	3,65
Mass with brake	m_{Br}	kg	2,8	3,25	3,75	4,2
Brake torque	M_{Br}	Nm	4,5	4,5	4,5	4,5

SERVOMOTORS SMXT3

0.65-3 Nm

DIMENSIONS



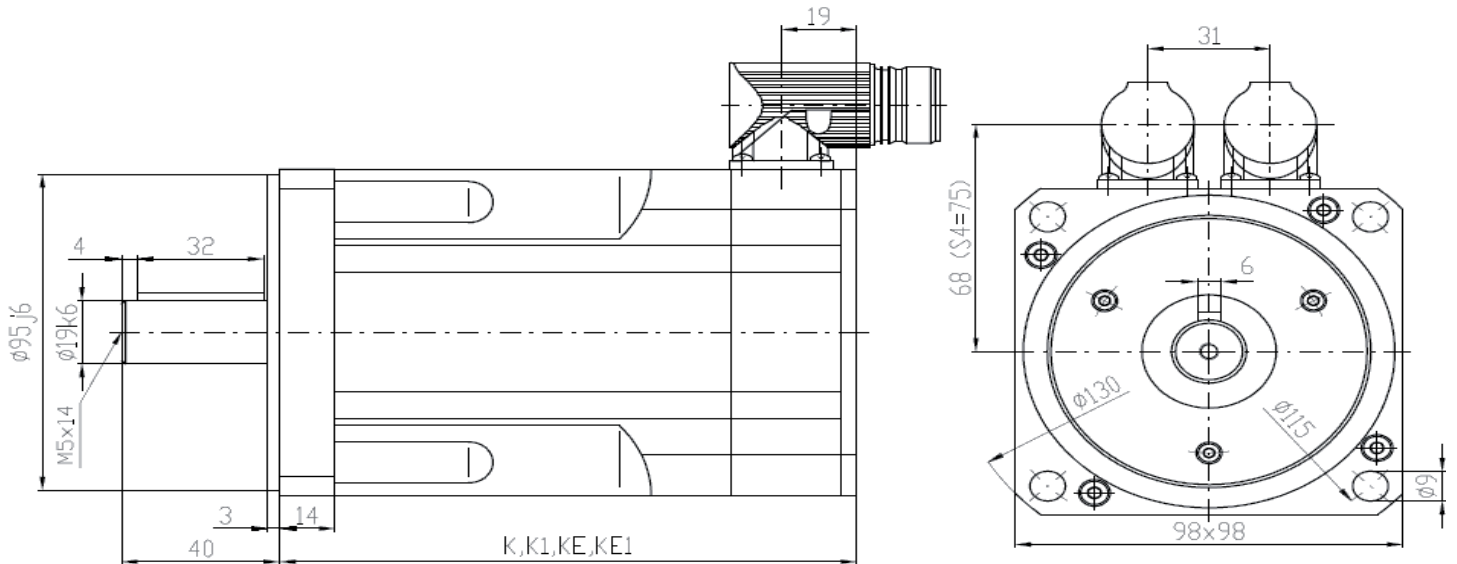
Type	K (resolver)	K1 (resolver+brake)	KE (EnDat)	KE1(EnDat+brake)
SMXT3-65	115 mm	148 mm	150 mm	183 mm
SMXT3-130	133 mm	166 mm	168 mm	201 mm
SMXT3-190	151 mm	184 mm	186 mm	219 mm
SMXT3-250	169 mm	202 mm	204 mm	237 mm
SMXT3-300	187 mm	220 mm	222 mm	255 mm

On request we can send you the technical parameters of the motors designed for different DC-Voltages or speed/torque characteristics. Other adaptations and modifications are possible.

TECHNICAL DATA

		VDC	560				
Magnets Nd-Fe-B			SMXT4-260	SMXT4-390	SMXT4-530	SMXT4-750	SMXT4-950
Stall torque	M_0	Nm	2,6	3,9	5,3	7,5	9,5
Stall current	I_0	A	1,92	2,9	4,1	4,8	6,6
Nominal torque	M_N	Nm	2,3	3,3	4,6	6,4	8,5
Nominal speed	n_N	min. ⁻¹	3000	3000	3000	3000	3000
Nominal power	P_N	W	723	1037	1446	2011	2671
Nominal current	I_N	A	1,85	2,6	3,8	4,4	6,2
Maximum torque	M_{max}	Nm	10,4	15,6	21	30	38
Maximum current	I_{max}	A	11,5	17,3	25	29	40
Max. speed mech.	n_{max}	min. ⁻¹	12000	12000	12000	12000	12000
Torque constant	K_M	Nm/A	1,36	1,36	1,29	1,55	1,44
Voltage constant	K_E	V/1000 min. ⁻¹	82	82	82	94	87
Resistance 2 ph.	R_{2Ph}	Ω	9,6	6,3	4,2	3	1,65
Inductance 2 ph.	L_{2Ph}	mH	41,5	33,1	24	19,2	11
Inertia	J	kgcm ²	1,9	2,3	2,7	4,2	6,1
Mass without brake	m	kg	4,5	5,1	5,6	7,7	10,5
Mass with brake	m_{Br}	kg	5,4	6	6,5	8,7	11,4
Brake torque	M_{Br}	Nm	9	9	9	9	9

DIMENSIONS



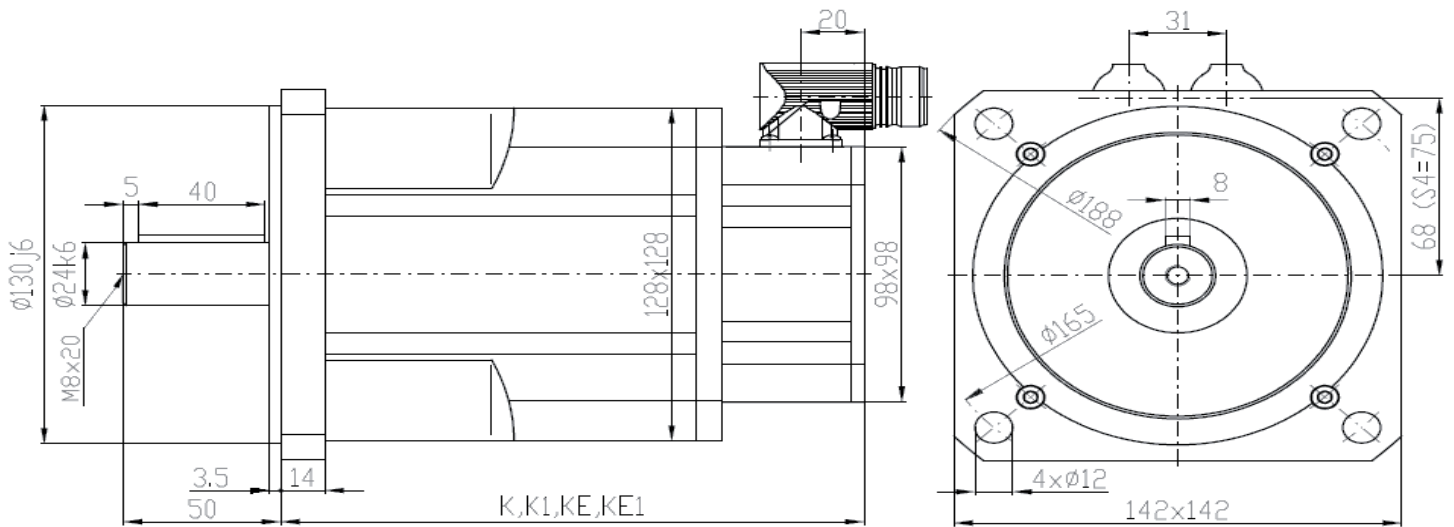
Type	K (resolver)	K1 (resolver+brake)	KE (EnDat)	KE1(EnDat+brake)
SMXT4-260	148 mm	180 mm	183 mm	215 mm
SMXT4-390	163 mm	195 mm	198 mm	230 mm
SMXT4-530	178 mm	210 mm	213 mm	245 mm
SMXT4-750	223 mm	255 mm	258 mm	290 mm
SMXT4-950	276 mm	308 mm	313 mm	345 mm

On request we can send you the technical parameters of the motors designed for different DC-Voltages or speed/torque characteristics. Other adaptations and modifications are possible.

TECHNICAL DATA

		VDC	560					
Magnets Nd-Fe-B			SMXT5-430	SMXT5-660	SMXT5-1050	SMXT5-1130	SMXT5-1700	SMXT5-2200
Stall torque	M_0	Nm	4,2	4,2	1,7	0,95	0,95	0,54
Stall current	I_0	A	24,6	27,8	15,2	9	10	5,9
Nominal torque	M_N	Nm	2,9	5,9	8,1	9,1	11,3	13,1
Nominal speed	n_N	min. ⁻¹	8,8	9,5	12	13,2	15,7	18,2
Nominal power	P_N	W	9,1	9,1	10,9	12,3	15,1	15,1
Nominal current	I_N	A	18	18	18	18	18	18
Maximum torque	M_{max}	Nm	4,2	4,2	1,7	0,95	0,95	0,54
Maximum current	I_{max}	A	24,6	27,8	15,2	9	10	5,9
Max. speed mech.	n_{max}	min. ⁻¹	2,9	5,9	8,1	9,1	11,3	13,1
Torque constant	K_M	Nm/A	8,8	9,5	12	13,2	15,7	18,2
Voltage constant	K_E	V/1000 min. ⁻¹	9,1	9,1	10,9	12,3	15,1	15,1
Resistance 2 ph.	R_{2Ph}	Ω	4,2	4,2	1,7	0,95	0,95	0,54
Inductance 2 ph.	L_{2Ph}	mH	24,6	27,8	15,2	9	10	5,9
Inertia	J	kgcm ²	2,9	5,9	8,1	9,1	11,3	13,1
Mass without brake	m	kg	8,8	9,5	12	13,2	15,7	18,2
Mass with brake	m_{Br}	kg	9,1	9,1	10,9	12,3	15,1	15,1
Brake torque	M_{Br}	Nm	18	18	18	18	18	18

DIMENSIONS



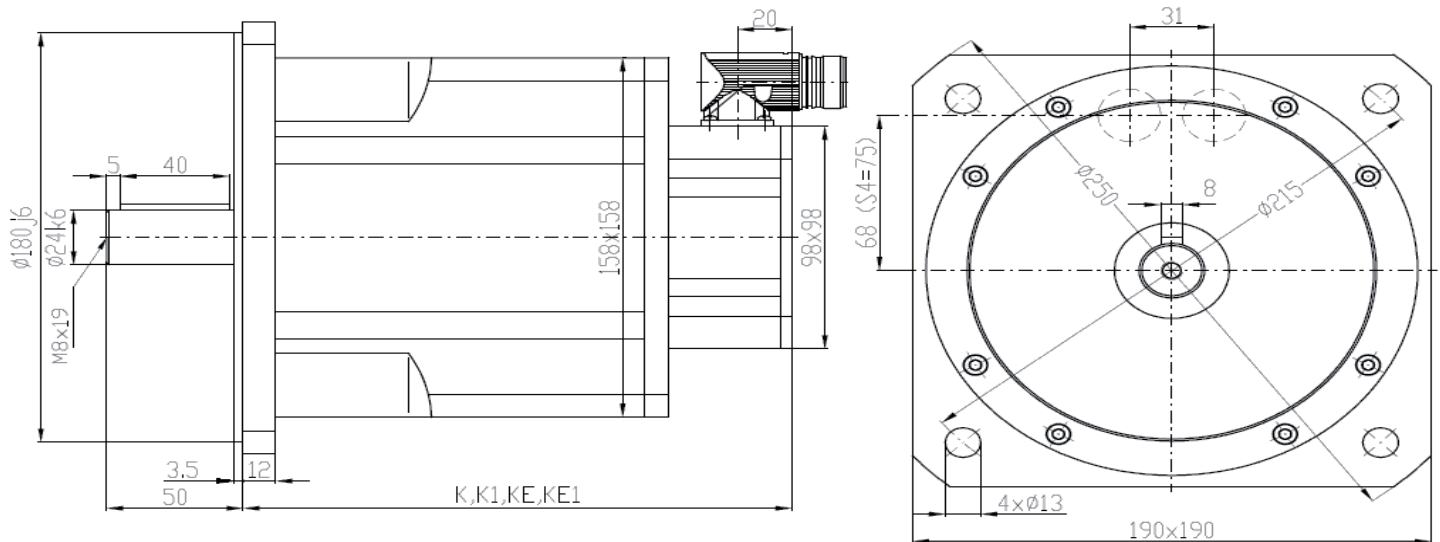
Type	K (resolver)	K1 (resolver+brake)	KE (EnDat)	KE1(EnDat+brake)
SMXT5-430	169 mm	212 mm	173 mm	209 mm
SMXT5-660	186 mm	229 mm	205 mm	248 mm
SMXT5-1050	220 mm	263 mm	239 mm	282 mm
SMXT5-1350	237 mm	280 mm	256 mm	299 mm
SMXT5-1700	271 mm	314 mm	290 mm	333 mm
SMXT5-2200	305 mm	348 mm	324 mm	367 mm

On request we can send you the technical parameters of the motors designed for different DC-Voltages or speed/torque characteristics. Other adaptations and modifications are possible.

TECHNICAL DATA

		VDC	560				
Magnets Nd-Fe-B			SMXT6-700	SMXT6-1350	SMXT6-1900	SMXT6-2200	SMXT6-2900
Stall torque	M_0	Nm	7	13,5	19	22	29
Stall current	I_0	A	6,1	8,2	13,8	14,6	17,2
Nominal torque	M_N	Nm	6	13	17	19	24
Nominal speed	n_N	min. ⁻¹	3000	3000	3000	3000	3000
Nominal power	P_N	W	1885	4084	5341	5969	7540
Nominal current	I_N	A	5,8	8,2	12,8	13,1	14,7
Maximum torque	M_{max}	Nm	21	47	57	66	87
Maximum current	I_{max}	A	26	35	59	62	73
Max. speed mech.	n_{max}	min. ⁻¹	6000	6000	6000	6000	6000
Torque constant	K_M	Nm/A	1,14	1,65	1,37	1,51	1,69
Voltage constant	K_E	V/1000 min. ⁻¹	69	100	83	91	102
Resistance 2 ph.	R_{2Ph}	Ω	1,83	1,1	0,42	0,41	0,31
Inductance 2 ph.	L_{2Ph}	mH	16,3	14,6	6,3	6,4	5,6
Inertia	J	kgcm ²	7,8	13,1	18,7	22	33
Mass without brake	m	kg	9,7	13,9	18,2	20,3	26,7
Mass with brake	m_{Br}	kg	12,7	17,9	21,2	23,3	29,7
Brake torque	M_{Br}	Nm	36	36	36	36	36

DIMENSIONS



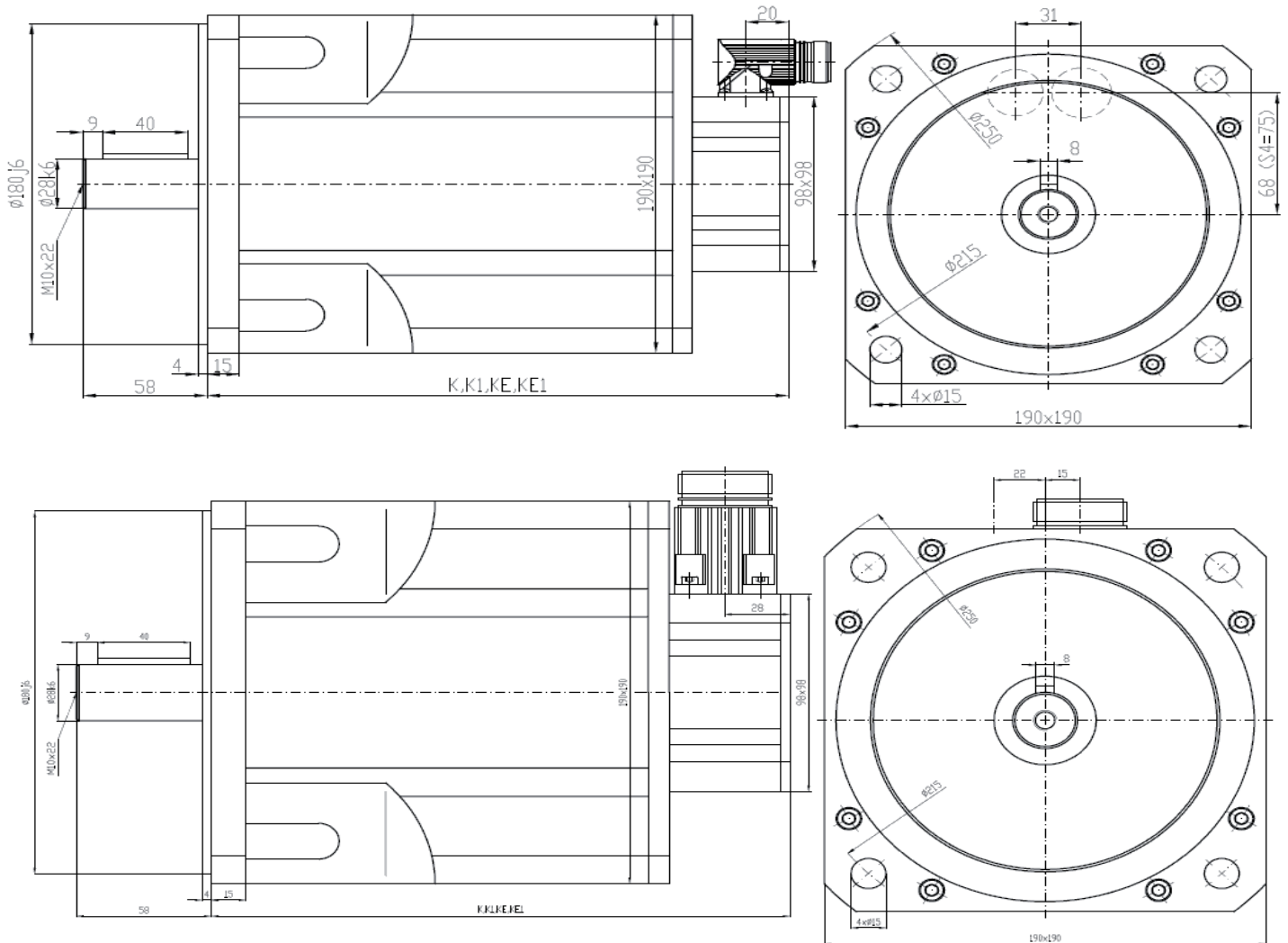
Type	K (resolver)	K1 (resolver+brake)	KE (EnDat)	KE1(EnDat+brake)
SMXT6-700	169 mm	212 mm	177 mm	230 mm
SMXT6-1350	186 mm	229 mm	221 mm	274 mm
SMXT6-1900	220 mm	263 mm	255 mm	308 mm
SMXT6-2200	237 mm	280 mm	272 mm	325 mm
SMXT6-2900	271 mm	314 mm	330 mm	383 mm

On request we can send you the technical parameters of the motors designed for different DC-Voltages or speed/torque characteristics. Other adaptations and modifications are possible.

TECHNICAL DATA

		VDC	560					
Magnets Nd-Fe-B			SMXT7-850	SMXT7-1250	SMXT7-1850	SMXT7-2700	SMXT7-3200	SMXT7-4000
Stall torque	M_0	Nm	8,5	12,5	18,5	26	32	40
Stall current	I_0	A	5,9	8	11	16	20,8	24,7
Nominal torque	M_N	Nm	6,5	10,5	14	21	23	26
Nominal speed	n_N	min. ⁻¹	3000	3000	3000	3000	3000	3000
Nominal power	P_N	W	2042	3299	4398	6597	7226	8168
Nominal current	I_N	A	5	7,3	9,1	13,5	16,4	17,9
Maximum torque	M_{max}	Nm	26	38	56	81	96	120
Maximum current	I_{max}	A	23	31	43	62	81	96
Max. speed mech.	n_{max}	min. ⁻¹	6000	6000	6000	6000	6000	6000
Torque constant	K_M	Nm/A	1,44	1,57	1,69	1,69	1,54	1,62
Voltage constant	K_E	V/1000 min. ⁻¹	87	95	102	102	93	98
Resistance 2 ph.	R_{2Ph}	Ω	1,92	1,14	0,82	0,43	0,29	0,23
Inductance 2 ph.	L_{2Ph}	mH	20,5	14,1	12,1	7,5	5,3	4,5
Inertia	J	kgcm ²	23,5	26,7	29,8	36,1	39,2	45,5
Mass without brake	m	kg	12,4	15,1	17,9	23,5	26	31,5
Mass with brake	m_{Br}	kg	15,4	18,1	20,9	26,5	29	34,5
Brake torque	M_{Br}	Nm	36	36	36	36	36	36

DIMENSIONS



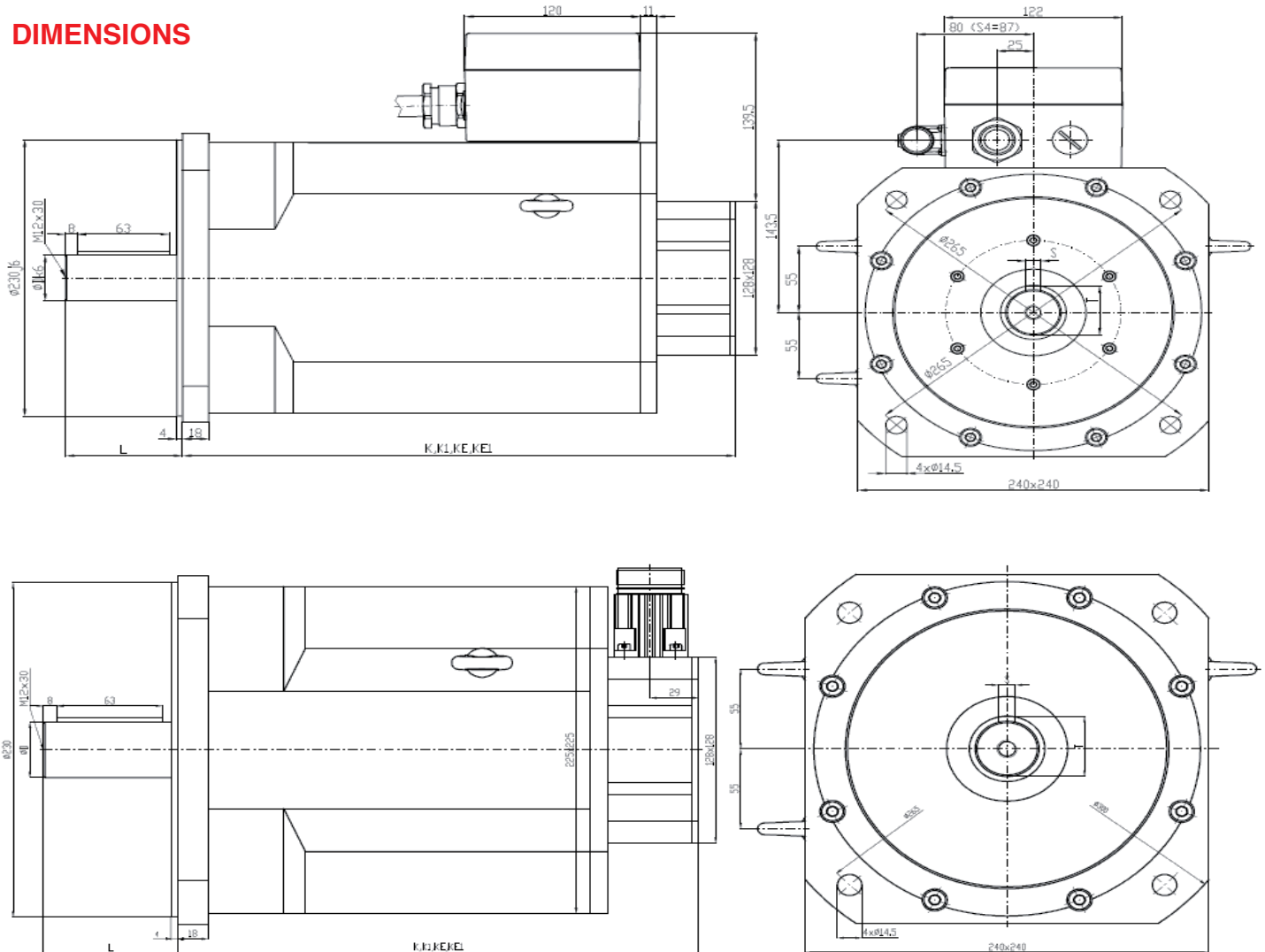
Type	K (resolver)	K1 (resolver+brake)	KE (EnDat)	KE1(EnDat+brake)
SMXT7-850	168 mm	222 mm	188 mm	242 mm
SMXT7-1250	183 mm	237 mm	203 mm	257 mm
SMXT7-1850	198 mm	252 mm	218 mm	272 mm
SMXT7-2700	242 mm	296 mm	262 mm	316 mm
SMXT7-3200	257 mm	326 mm	277 mm	331 mm
SMXT7-4000	287 mm	356 mm	307 mm	361 mm

On request we can send you the technical parameters of the motors designed for different DC-Voltages or speed/torque characteristics. Other adaptations and modifications are possible.

TECHNICAL DATA

		VDC	560				
Magnets Nd-Fe-B			SMXT8-400	SMXT8-680	SMXT8-930	SMXT8-1150	SMXT4-950
Stall torque	M_0	Nm	2,6	3,9	5,3	7,5	9,5
Stall current	I_0	A	1,92	2,9	4,1	4,8	6,6
Nominal torque	M_N	Nm	2,3	3,3	4,6	6,4	8,5
Nominal speed	n_N	min. ⁻¹	3000	3000	3000	3000	3000
Nominal power	P_N	W	723	1037	1446	2011	2671
Nominal current	I_N	A	1,85	2,6	3,8	4,4	6,2
Maximum torque	M_{max}	Nm	10,4	15,6	21	30	38
Maximum current	I_{max}	A	11,5	17,3	25	29	40
Max. speed mech.	n_{max}	min. ⁻¹	12000	12000	12000	12000	12000
Torque constant	K_M	Nm/A	1,36	1,36	1,29	1,55	1,44
Voltage constant	K_E	V/1000 min. ⁻¹	82	82	82	94	87
Resistance 2 ph.	R_{2Ph}	Ω	9,6	6,3	4,2	3	1,65
Inductance 2 ph.	L_{2Ph}	mH	41,5	33,1	24	19,2	11
Inertia	J	kgcm ²	1,9	2,3	2,7	4,2	6,1
Mass without brake	m	kg	4,5	5,1	5,6	7,7	10,5
Mass with brake	m_{Br}	kg	5,4	6	6,5	8,7	11,4
Brake torque	M_{Br}	Nm	9	9	9	9	9

DIMENSIONS



Type	D	L	S	T	K (resolver)	K1 (resolver+brake)	KE (EnDat)	KE1(EnDat+brake)
SMXT8-400	38mm	80mm	10mm	41,3mm	310mm	378mm	322mm	390mm
SMXT8-680	38mm	80mm	10mm	41,3mm	378mm	446mm	390mm	458mm
SMXT8-930	42mm	110mm	12mm	45,1mm	446mm	514mm	458mm	526mm
SMXT8-1150	42mm	110mm	12mm	45,1mm	514mm	582mm	526mm	594mm

On request we can send you the technical parameters of the motors designed for different DC-Voltages or speed/torque characteristics. Other adaptations and modifications are possible.