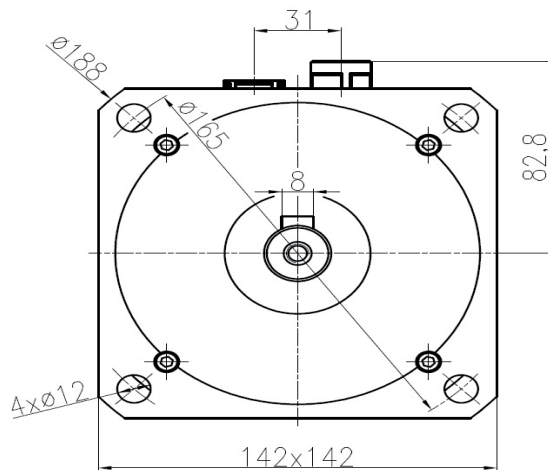
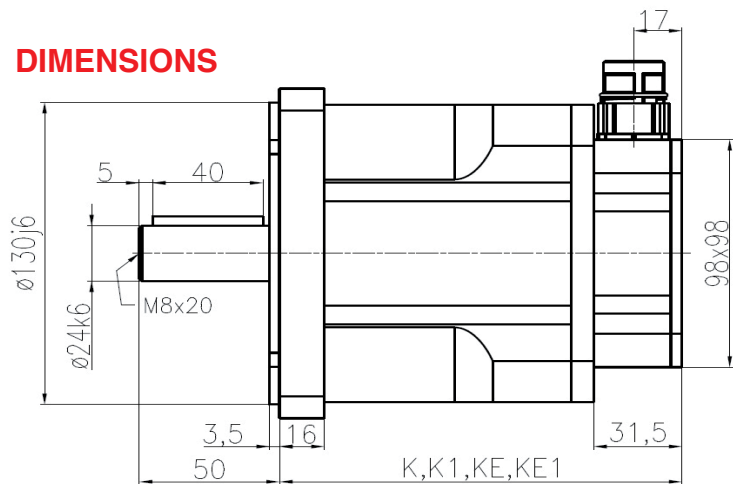


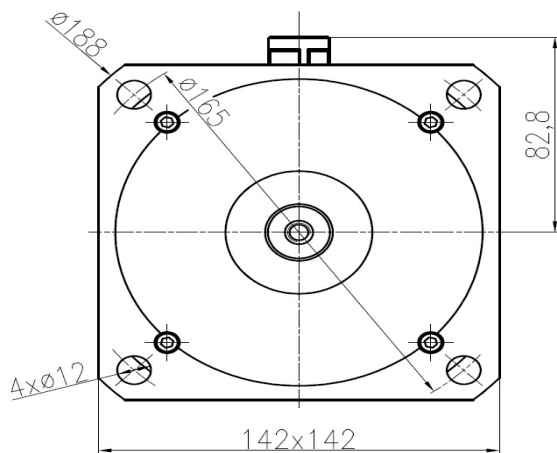
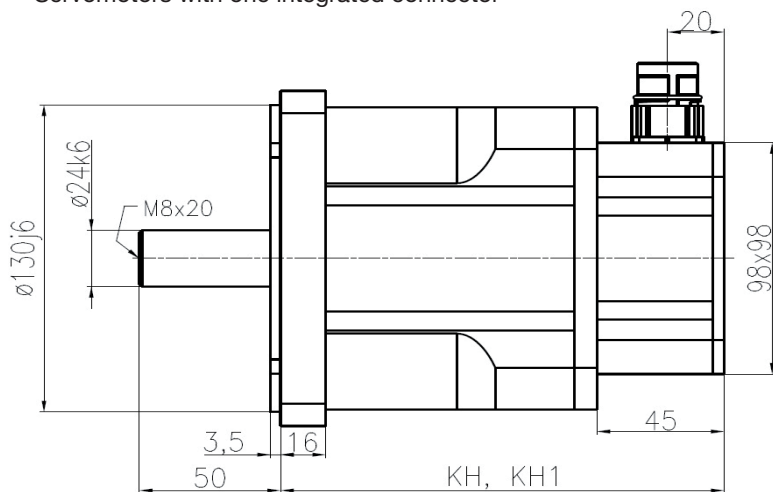
DIMENSIONS



Type	K (Resolver)	K1 (Resolver+brake)	KE (EnDAT)	KE1 (EnDAT+brake)
SMXN5-1200	143,5 mm	179,5 mm	177 mm	222 mm
SMXN5-1600	173,5 mm	209,5 mm	207 mm	252 mm
SMXN5-2000	203,5 mm	239,5 mm	237 mm	282 mm
SMXN5-2400	233,5 mm	269,5 mm	267 mm	312 mm

Length of motor with Hiperface sensor is the same like length of motor with EnDat sensor. In some types of motor can be smaller.

Servomotors with one integrated connector



Type	KH (DSL)	KH1 (DSL+brake)
SMXN5-1200	157 mm	206 mm
SMXN5-1600	187 mm	236 mm
SMXN5-2000	217 mm	266 mm
SMXN5-2400	247 mm	296 mm

On request we can send you the technical parameters of the motors designed for different DC-Voltages or speed/torque characteristics. Other adaptations and modifications are possible.