

TECHNICAL DATA

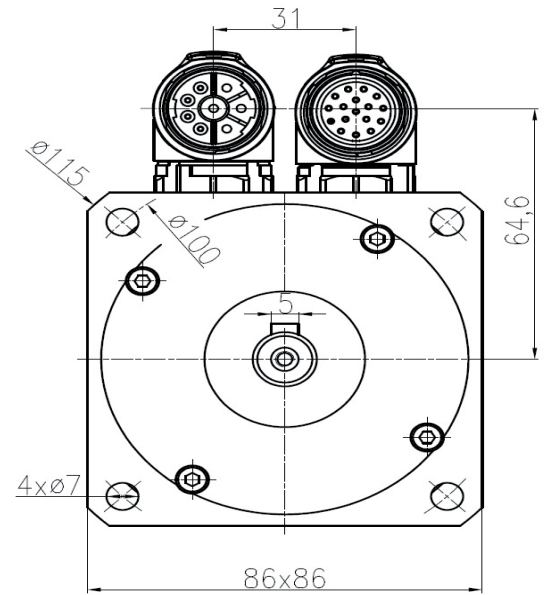
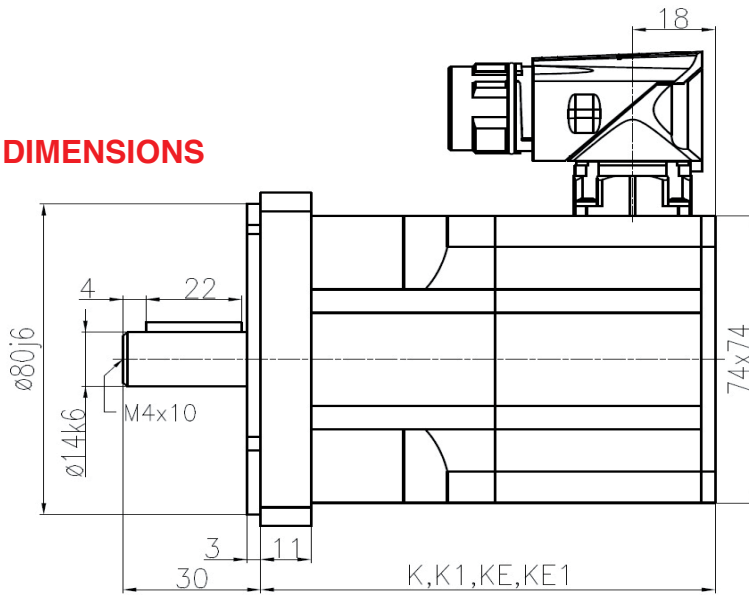
		VDC	36		320			
Magnets Nd-Fe-B			SMXN3-115	SMXN3-205	SMXN3-115	SMX3-205	SMXN3-350	SMXN3-480
Stall torque	M_0	Nm	1,15	2,05	1,15	2,05	3,5	4,8
Stall current	I_0	A	10	10,3	2,02	2,79	4,23	4,8
Nominal torque	M_N	Nm	1,15	2	1,1	1,9	3	3,7
Nominal speed	n_N	min. ⁻¹	1500	1000	4500	3000	3000	3000
Nominal power	P_N	W	180	209	518	597	942	1162
Nominal current	I_N	A	11,3	11	2,9	3,06	4,31	4,5
Maximum torque	M_{max}	Nm	3,5	6,2	3,45	6,15	10,5	14,4
Maximum current	I_{max}	A	44	42	11,1	12,74	19,36	17,3
Max. speed mech.	n_{max}	min. ⁻¹	12000	12000	12000	12000	12000	12000
Torque constant	K_M	Nm/A	0,11	0,2	0,45	0,74	0,83	0,99
Voltage constant	K_E	V/1000 rpm	6,9	12	27,5	44,5	50	60
Motor poles	$2p$	-	10	10	10	10	10	10
Resistance 2 ph.	R_{2Ph}	Ω	0,34	0,41	5,4	5,38	2,81	2,5
Inductance 2 ph.	L_{2Ph}	mH	0,75	1	12	13,3	8,1	7,5
Inertia	J	kgcm ²	0,31	0,55	0,31	0,55	1,04	1,52
Mass without brake	m	kg	1,5	2	1,5	2	2,9	3,8
Mass with brake	m_{Br}	kg	2	2,5	2	2,5	3,4	4,3
Brake torque	M_{Br}	Nm	4,5	4,5	4,5	4,5	4,5	4,5

		VDC	560			
Magnets Nd-Fe-B			SMXN3-115	SMXN3-205	SMXN3-350	SMXN3-480
Stall torque	M_0	Nm	1,15	2,05	3,5	4,8
Stall current	I_0	A	1,78	2,25	2,38	2,8
Nominal torque	M_N	Nm	1,01	1,85	3	3,7
Nominal speed	n_N	min. ⁻¹	6000	4500	3000	3000
Nominal power	P_N	W	635	872	942	1162
Nominal current	I_N	A	1,99	2,56	2,42	2,6
Maximum torque	M_{max}	Nm	3,45	6,15	10,5	14,4
Maximum current	I_{max}	A	7,85	9,13	10,88	10,1
Max. speed mech.	n_{max}	min. ⁻¹	12000	12000	12000	12000
Torque constant	K_M	Nm/A	0,65	0,91	1,47	1,7
Voltage constant	K_E	V/1000 rpm	39	55	89	103
Motor poles	$2p$	-	10	10	10	10
Resistance 2 ph.	R_{2Ph}	Ω	10,71	8,4	8,89	7,5
Inductance 2 ph.	L_{2Ph}	mH	23	20,6	25,5	22,7
Inertia	J	kgcm ²	0,31	0,55	1,04	1,5
Mass without brake	m	kg	1,5	2	2,9	4,3
Mass with brake	m_{Br}	kg	2	2,5	3,4	4,5
Brake torque	M_{Br}	Nm	4,5	4,5	4,5	0,4

SERVOMOTORS SMXN3

1.15-4.8 Nm

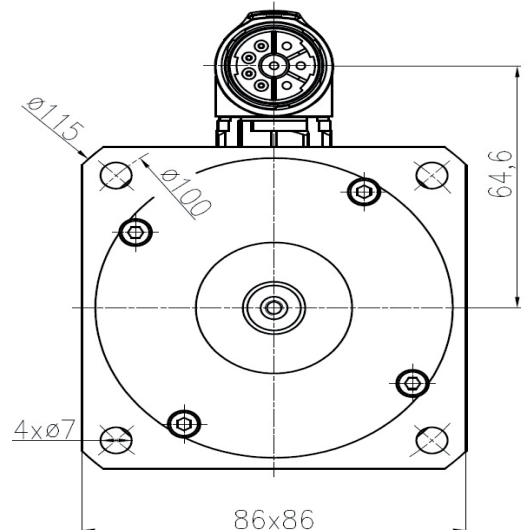
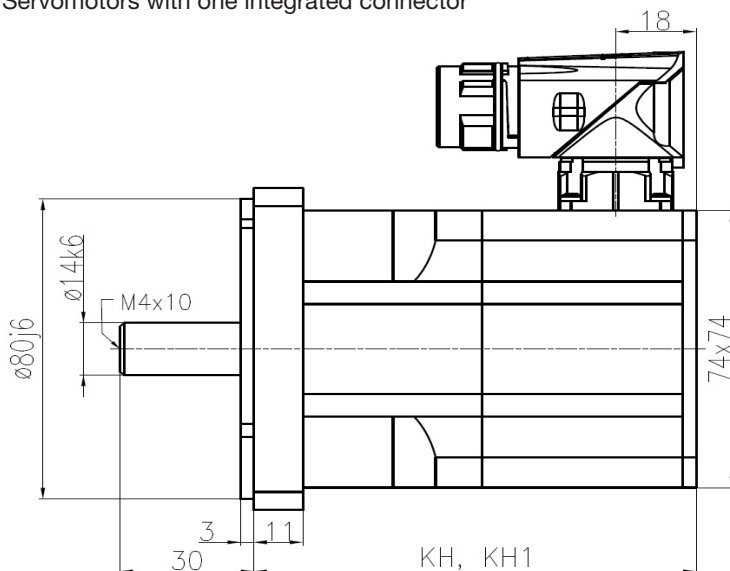
DIMENSIONS



Type	K (Resolver)	K1 (Resolver+brake)	KE (EnDAT)	KE1 (EnDAT+brake)
SMXN3-115	82 mm	120 mm	123 mm	161 mm
SMXN3-205	100 mm	138 mm	141 mm	197 mm
SMXN3-350	136 mm	174 mm	177 mm	215 mm
SMXN3-480	172 mm	210 mm	213 mm	251 mm

Length of motor with Hiperface sensor is the same like length of motor with EnDat sensor. In some types of motor can be smaller.

Servomotors with one integrated connector



Type	KH (DSL)	KH1 (DSL+brake)
SMXN3-115	99 mm	144 mm
SMXN3-205	117 mm	162 mm
SMXN3-350	153 mm	198 mm
SMXN3-480	189 mm	234 mm

On request we can send you the technical parameters of the motors designed for different DC-Voltages or speed/torque characteristics. Other adaptations and modifications are possible.