

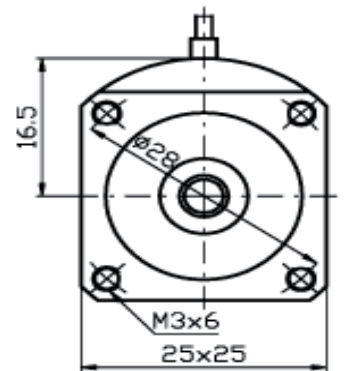
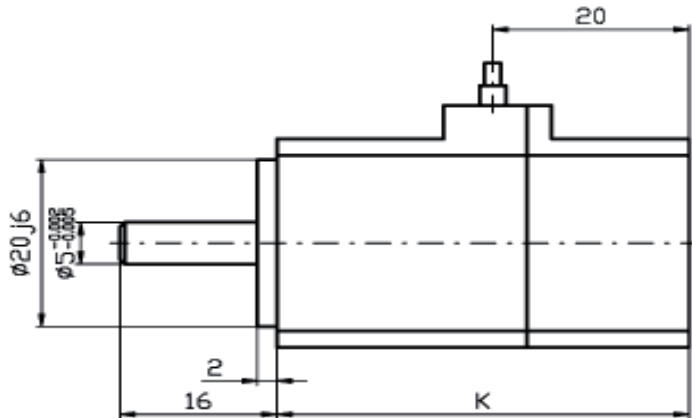
TECHNICAL DATA

| | | VDC | 24 | | |
|---------------------------|-----------|---------------------------|----------|----------|----------|
| Magnets Nd-Fe-B | | | SMXH1-03 | SMXH1-06 | SMXH1-09 |
| Stall torque | M_0 | Nm | 0,03 | 0,06 | 0,09 |
| Stall current | I_0 | A | 2,3 | 2,3 | 3 |
| Nominal torque | M_N | Nm | 0,03 | 0,06 | 0,09 |
| Nominal speed | n_N | min. ⁻¹ | 4500 | 3000 | 3000 |
| Nominal power | P_N | W | 15 | 19 | 29 |
| Nominal current | I_N | A | 2,4 | 2,4 | 3,2 |
| Maximum torque | M_{max} | Nm | 0,07 | 0,12 | 0,17 |
| Maximum current | I_{max} | A | 5,1 | 4,6 | 5,6 |
| Max. speed mech. | n_{max} | min. ⁻¹ | 12000 | 12000 | 12000 |
| Torque constant | K_M | Nm/A | 0,01 | 0,03 | 0,03 |
| Voltage constant | K_E | V/1000 min. ⁻¹ | 0,8 | 1,6 | 1,8 |
| Motor poles | 2p | - | 6 | 6 | 6 |
| Resistance 2 ph. | R_{2Ph} | Ω | 2,4 | 2,6 | 2,4 |
| Inductance 2 ph. | L_{2Ph} | mH | 0,3 | 0,33 | 0,26 |
| Inertia | J | kgcm ² | 0,02 | 0,04 | 0,05 |
| Mass without brake | m | kg | 0,1 | 0,2 | 0,3 |
| Mass with brake | m_{Br} | kg | 0,3 | 0,4 | 0,5 |
| Brake torque | M_{Br} | Nm | 0,1 | 0,1 | 0,1 |

SERVOMOTORS SMXH1

0.03-0.09 Nm

DIMENSIONS



| Type | K (resolver) | K1 (resolver+brake) |
|----------|--------------|---------------------|
| SMXH1-03 | 42 mm | 69 mm |
| SMXH1-06 | 52 mm | 79 mm |
| SMXH1-09 | 62 mm | 89 mm |

On request we can send you the technical parameters of the motors designed for different DC-Voltages or speed/torque characteristics. Other adaptations and modifications are possible.